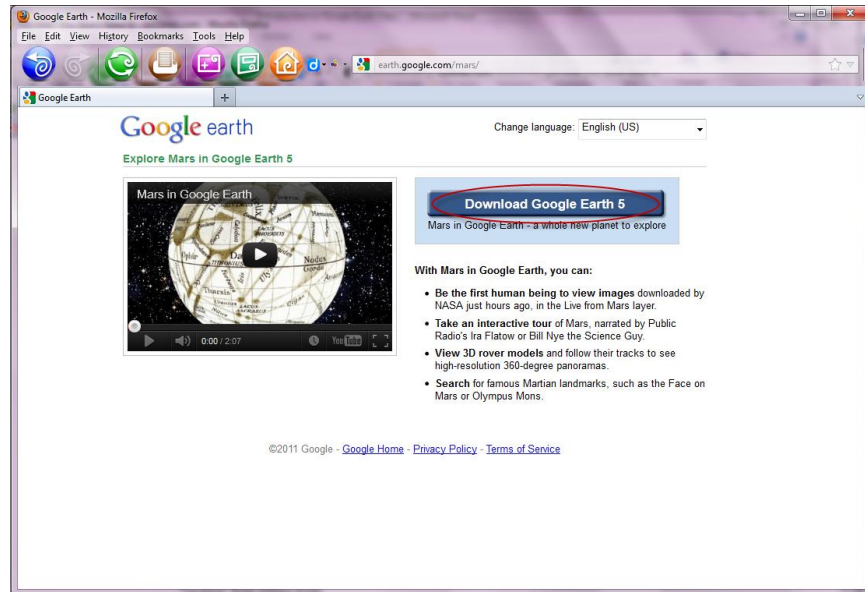


Introduction to Google Earth

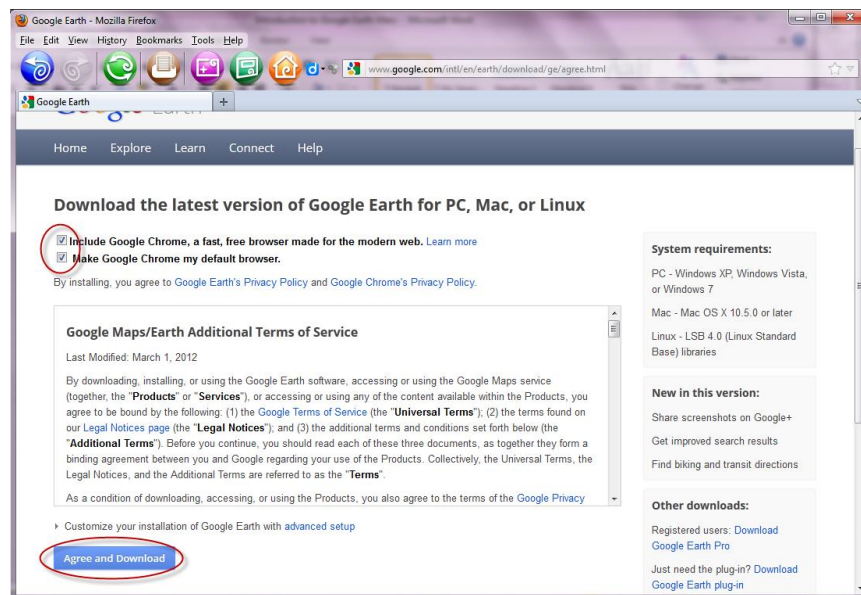
1. Download and install Google Earth prior to beginning the Mars Rover Celebration project:

<http://earth.google.com/mars/>

(Note: Administrator privileges are required to download and install software.)

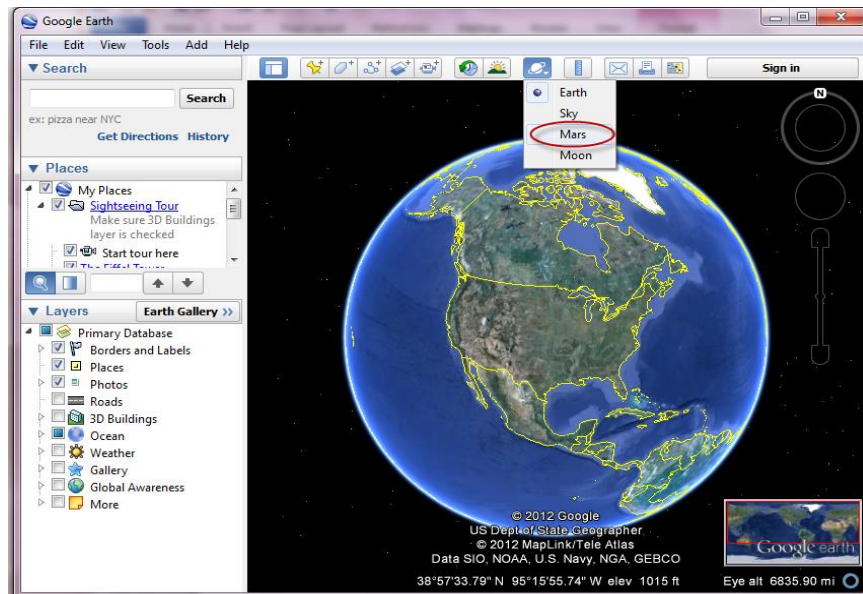


2. Before downloading the software, uncheck the boxes and click *Agree and Download*.

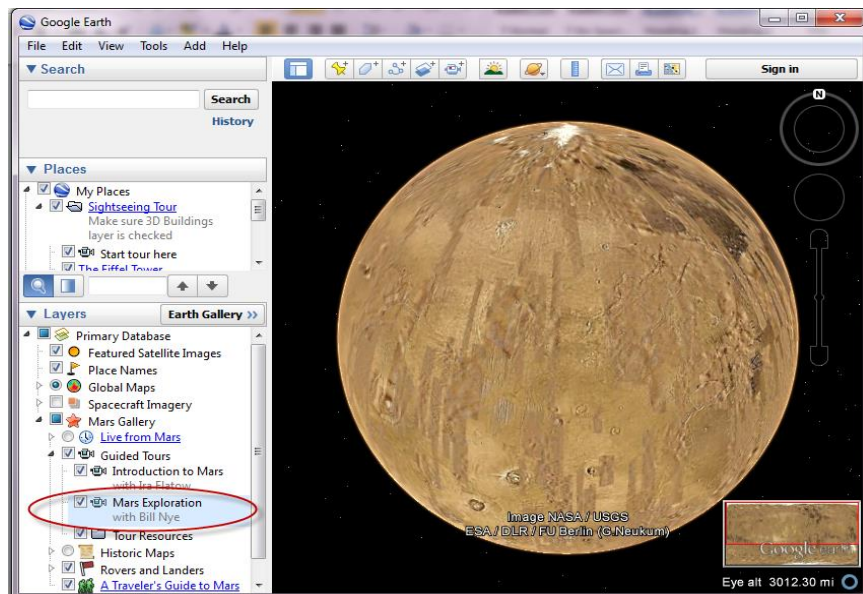


3. When prompted, click *Save File* to download the software to the desktop. Once the software has downloaded, double-click the *GoogleEarthWin* icon to install the software.

4. After installing the software, double-click the new *Google Earth* desktop icon to launch the software. To access Mars, locate the planet icon along the top toolbar and select *Mars*.



5. With Mars loaded, access the *Layers* panel in the lower left. To conduct the pre-recorded tour, click the arrow to the left of *Guided Tours* to expand the category. Then, double-click *Mars Exploration with Bill Nye (Runtime: 08:24)* to begin the tour.



To conduct a self-guided tour with students, expand each category in the *Layers* panel by clicking the small arrows to the left. Check the boxes to show all elements that will be required for the tour. Use the mouse to rotate and select different places on Mars.